



CYGNUS INNOVATION LTD

Business Software Experts

EMPOWERING **DIGITAL TRADING** BY XTRADE OMS



APPROVED BY :



SCAN HERE



Table of Content

Content : 01

About Us..... 01

Content : 02

Core Features of XTrade OMS..... 03

Content : 03

Advanced Features & Tools..... 05

Content : 04

Types of OMS..... 07

Content : 05

XTrade Advantages..... 09

Content : 06

Market Need & Trend 12

Content : 07

OMS Integration & Support 13

Content : 08

FAQ & Common Myths 14

Content : 09

XTrade Mobile App 27

Content : 10

Technology Stack 29

Content : 11

Requirements..... 31

Content : 12

Roadmap & Future Plan..... 34

Content : 13

Core Security Features..... 34

Content : 14

Contact..... 34

About XTrade OMS

"XTrade OMS is a cutting-edge Order Management System designed to streamline capital market trading. It offers fast, secure, and reliable order processing, empowering brokers and investors to make informed decisions with confidence."



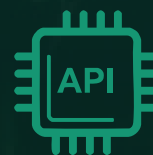
Real-time trading
updates with zero
latency



Multi-level risk
management &
compliance



Intuitive Dashboard
for easy decision
making



Seamless integration
with brokerage
APIs



TARGET AUDIENCE

"Designed for stock brokers, investment firms, and individual traders seeking efficiency, transparency, and reliability in order execution."



TRENDS IN CAPITAL MARKETS

- ✓ Real-time trading and algorithmic trading adoption
- ✓ Integration of technology with financial platforms (FinTech)
- ✓ Rise of automated OMS (Order Management Systems) for speed and accuracy
- ✓ Increased focus on regulatory compliance and risk management

KEY CHALLENGES IN CAPITAL MARKETS

- ✓ High volatility causing unpredictable risks
- ✓ Complex regulatory and compliance requirements
- ✓ Slow order processing and settlement delays
- ✓ Lack of transparency in trade execution



ROLE OF OMS IN CAPITAL MARKETS

"An Order Management System (OMS) automates trade processing, reduces latency, ensures regulatory compliance, and provides brokers and traders with actionable insights to make smarter decisions."



Core Features of XTrade OMS

Order Management Module

"The Order Management module enables fast, accurate, and real-time order placement, modification, and execution across multiple markets and instruments. Users can manage market, limit, stop, and conditional orders efficiently."

- ✓ Multi-asset order handling (stocks, bonds, derivatives)
- ✓ Real-time order tracking and updates
- ✓ Multi-level approval workflow for large orders

Risk Management Module

"Risk management tools monitor exposure, enforce limits, and ensure compliance with regulatory requirements, helping reduce potential losses and market risk."

- ✓ Real-time exposure monitoring
- ✓ Margin and leverage calculations
- ✓ Alerts for breaches of pre-defined limits



Core Features of XTrade OMS



Portfolio Management Module

"This module provides a comprehensive view of investor portfolios, including holdings, valuations, and performance metrics, enabling informed investment decisions."

- ✓ Real-time portfolio valuation and P&L tracking
- ✓ Asset allocation and diversification insights
- ✓ Performance comparison across time periods



Analytics Module

"Analytics capabilities allow brokers and traders to generate insights from market data, historical trades, and portfolio performance to make data-driven decisions."

- ✓ Advanced trade analytics and reporting
- ✓ Historical data trends and visualizations
- ✓ Predictive analytics and alerts



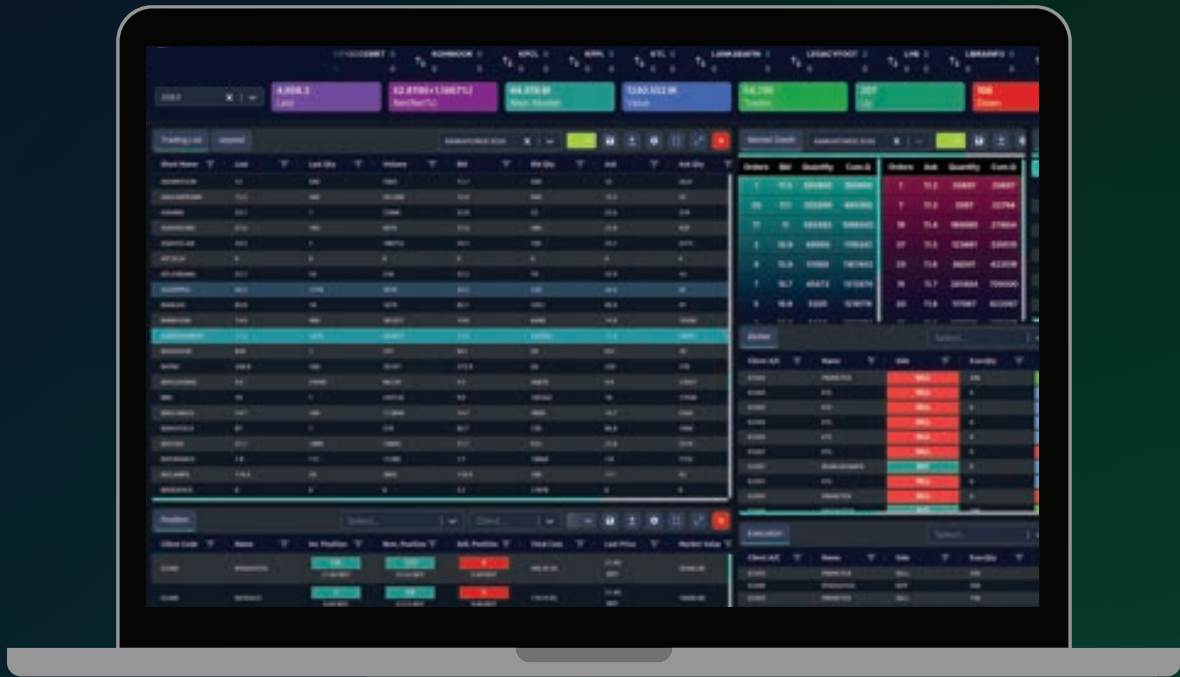
Security Module

"Security features ensure end-to-end protection of user data and transactions, including authentication, access control, and encryption."

- ✓ Role-based access control
- ✓ Multi-factor authentication
- ✓ End-to-end encryption
- ✓ Audit trails and activity logs



Advanced Features & Tools



AI/ML Analytics

"XTrade OMS leverages Artificial Intelligence and Machine Learning to analyze market patterns, predict trends, and optimize trading strategies in real-time."

- Predictive analytics for price movements
- Algorithmic trade recommendations
- Pattern recognition for risk management

Real-Time Dashboards

"Interactive dashboards provide a consolidated view of market data, orders, portfolio performance, and key metrics at a glance."

- Customizable dashboard widgets
- Live updates of orders, trades, and market movements
- Quick access to critical KPIs



Advanced Features & Tools



Alerts & Notifications

"Smart alerts notify users about market events, order executions, risk breaches, or portfolio changes instantly via email, SMS, or in-app notifications."

- ✔ Price movement alerts
- ✔ Risk exposure notifications
- ✔ Trade execution confirmations



Advanced Reporting

"OMS generates detailed, customizable reports for trade history, risk exposure, portfolio performance, and compliance, aiding decision-making and regulatory Automated report generation"

- ✔ Export in PDF, Excel, or CSV formats
- ✔ Risk exposure notifications



Interactive Charts

"Dynamic charts visualize historical and real-time market data, providing traders with actionable insights and better decision-making tools."

- ✔ Candlestick, line, and bar charts
- ✔ Zoom-in, filter, and comparison tools
- ✔ Integration with AI/ML insights



TYPES OF OMS

Types of OMS & XTrade Advantages

"Order Management Systems (OMS) can be deployed in different ways depending on business needs. Understanding the type of OMS helps organizations choose the best fit for efficiency, cost, and scalability."

Traditional / On-Premises OMS



- ✓ Hosted on the company's own servers
- ✓ High control and customization
- ✓ Higher upfront cost, maintenance required

Cloud-Based OMS



- ✓ Hosted on cloud infrastructure (AWS, Azure, GCP)
- ✓ Scalable, accessible from anywhere
- ✓ Lower upfront cost, subscription-based

Hybrid OMS



- ✓ Combines on-premises and cloud systems
- ✓ Flexibility and better control
- ✓ Best for organizations gradually moving to cloud



Comparison Table – OMS Types

Feature / OMS Type	Traditional OMS	Cloud OMS	Hybrid OMS
Deployment	On-premises	Cloud	On-prem + Cloud
Cost	High upfront	Subscription	Medium
Scalability	Limited	High	Medium-High
Maintenance	In-house	Provider-based	Shared
Accessibility	Local network	Anywhere	Mixed
Security & Compliance	High	Provider-level	Mixed
Customization	Full control	Limited	Moderate



XTrade Advantages

"XTrade OMS combines the best of all worlds, offering speed, scalability, and security."

- ✓ Multi-type deployment options: cloud, on-prem, hybrid
- ✓ Fast and reliable order execution
- ✓ Real-time dashboards and analytics
- ✓ Strong risk management & compliance
- ✓ AI/ML-powered insights for smarter trading



How XTrade Saves Time & Reduces Risk

"In capital markets, time is money and risk is inevitable. XTrade OMS streamlines workflows and enforces robust risk controls to save time, reduce errors, and enhance decision-making for brokers and investors."

Before & After Workflow Diagrams



Before (Traditional OMS Manual Trading)

Steps :

1. Receive order manually
2. Record order in spreadsheet
3. Approve via phone/email
4. Submit order to exchange
5. Manually track settlement and risk



After (XTrade OMS Automated Workflow)

Steps :

1. Order entered in XTrade OMS dashboard
2. Automated approval workflow
3. Real-time submission to exchange
4. Automated risk monitoring & alerts
5. Real-time settlement tracking & reporting



Key Performance Indicators (KPIs)

Measurable improvements
with XTrade.

- ✓ Order processing time ↓ 70%
- ✓ Error rate ↓ 80%
- ✓ Trade execution speed ↑ 3x
- ✓ Risk exposure monitored in real-time
- ✓ Compliance breaches ↓ 90%



Market Need & Trend

"The capital market is evolving rapidly with increasing trade volumes, automation, and regulatory requirements. Efficient Order Management Systems like XTrade OMS are no longer optional but essential for brokers, investors, and trading firms."

Regulatory Pressures

- ✓ Mandatory trade reporting & compliance
- ✓ Real-time risk management standards
- ✓ Investor protection & audit trail obligations

Market Statistics

- ✓ Global trading volume ↑ 20% YoY
- ✓ Algorithmic trading accounts for 70% of total trades in developed markets
- ✓ Cloud adoption in trading platforms ↑ 40% in last 3 year

Market Opportunities

- ✓ Faster, automated trading solutions
- ✓ Integration with AI/ML analytics for smarter decisions
- ✓ Scalability for growing trading volumes
- ✓ Cost-efficient cloud deployment



OMS Integration & Support

"XTrade OMS is designed to integrate seamlessly with existing trading and brokerage systems. Coupled with 24/7 support and structured training, it ensures smooth adoption and operational efficiency."

API Integration

- ✓ RESTful and WebSocket APIs for real-time order execution
- ✓ Integration with trading exchanges, CRM, risk, and portfolio systems
- ✓ Supports automated workflows and data synchronization

Third-Party System Integration

- ✓ Accounting & reporting systems
- ✓ Market data providers and news feeds
- ✓ Compliance and regulatory platforms

24/7 Support

- ✓ Round-the-clock technical support
- ✓ Live chat, email, and phone assistance
- ✓ Quick resolution for critical issues

Training & Onboarding

- ✓ Guided onboarding sessions
- ✓ User manuals, video tutorials, and webinars
- ✓ Continuous education for new features and modules



FAQ & Common Myths

"To help clients better understand XTrade OMS, here are the most frequently asked questions and clarifications of common myths in the trading community."



Q1. Is XTrade OMS difficult to implement?

Answer: Not at all. It comes with quick deployment, APIs for integration, & guided onboarding support. Most clients go live within days, not months.



Q2. Can XTrade OMS handle large trading volumes?

Answer: Yes. It's cloud-native and scales automatically with market demand, handling peak loads seamlessly.



Q3. What about compliance with regulations?

Answer: XTrade OMS is fully compliant with SEC/DSE guidelines, ensuring audit readiness.



Q4. Does XTrade provide ongoing support?

Answer: Yes. Our 24/7 support team ensures continuous assistance through live chat, phone, and email.

Common Myths

01

Myth 1: OMS is only for large firms.

Reality: XTrade OMS is scalable and affordable, suitable for both small brokerages and large institutions.

02

Myth 2: Manual systems are more reliable.

Reality: Manual systems increase human error risk. XTrade OMS ensures accuracy, automation, and audit-ready records

03

Myth 3: OMS adoption is too expensive.

Reality: Cloud deployment lowers cost significantly, with pay-as-you-grow flexibility

04

Myth 4: OMS is too complex for staff to use.

Reality: XTrade OMS features intuitive UI, training, and user-friendly dashboards.



XTrade Mobile

Trading App

"Trade Anywhere, Anytime – The Power of XTrade in Your Pocket."

The **X Trade Mobile** App brings the full strength of our Order Management System (OMS) directly to your smartphone. Designed for both iOS and Android, it offers real-time trading, portfolio management, analytics, and risk monitoring – all through a secure and intuitive mobile interface.



Key Highlights

Full OMS Functionality – Place, modify, and track orders in real-time, just like the web or desktop version.

Real-Time Market Updates – Live prices, charts, and portfolio performance synced with the main OMS server.

Instant Notifications & Alerts – Get notified instantly on trade executions, price movements, or risk exposure.

Secure Login – Multi-factor authentication with biometric access (Face ID / Fingerprint ID).

Customizable Dashboard – Personalize widgets for portfolio, market trends, and order history.

Cross-Device Synchronization – Seamlessly sync your mobile activities with web and desktop OMS.



Core Modules on Mobile

- 1. Order Management:** Fast order entry, modification, and execution.
- 2. Portfolio Management:** Live P&L, asset allocation, and performance charts.
- 3. Risk Management:** Real-time alerts for margin, exposure, and compliance limits.
- 4. Reports & History:** Access trade summaries, compliance logs, and downloadable reports.

Security & Compliance

End-to-end encryption (TLS 1.3, AES-256).

Secure API communication between mobile app and OMS core.

Role-based permissions for traders, admins, and compliance officers.

Technology

Frontend: Flutter (cross-platform for iOS & Android).

Backend Integration: REST & WebSocket APIs with XTrade OMS Core.

Value Proposition

" With the XTrade Mobile App, traders and investors no longer need to stay at their desks to stay connected. From order execution to analytics – everything is accessible in real time, ensuring trading freedom without compromising security or performance,"



Technology Stack – The Engine Behind XTrade OMS

XTrade OMS is built on a robust, scalable, and modern technology stack designed for performance, security, and flexibility in capital markets. Each layer of our stack is optimized for real-time order processing, high availability, and future-proof innovation.

Core Technologies

Programming Languages

- ✓ Python (core engine – speed, reliability, scalability)
- ✓ Python (data analytics, AI/ML integration)
- ✓ JavaScript / TypeScript
(frontend, dashboards, interactivity)

Database & Storage

- ✓ PostgreSQL (primary transactional database, ACID compliance)
- ✓ MongoDB (flexible storage for unstructured trade data, logs)
- ✓ Redis (ultra-fast caching, session management)

Frameworks

- ✓ Django
- ✓ FastAPI (Python APIs & ML models)
- ✓ React.js (real-time trading dashboards, visualizations)
- ✓ Node.js (event-driven processing, API gateway)
- ✓ State Management (Redux)
- ✓ RTK Quarry
- ✓ Next.js (Admin Panel)

Message Broker

- ✓ Kafka
- ✓ Redis (Pub-Sub)
- ✓ Redis(Stream)



Cloud & Infrastructure

Cloud Providers: Multi-cloud ready

Containerization: Docker (isolation, easy deployment)

Orchestration: Kubernetes (scalability, self-healing clusters)

Load Balancing: Nginx / HAProxy

Streaming & Messaging: Apache Kafka

(real-time trade events), Redis (Pub-Sub), Redis(Stream)

Security & Compliance

Data Encryption: AES-256, TLS/SSL

Authentication & Authorization: OAuth2, JWT,
Role-Based Access Control (RBAC)

Compliance Standards: ISO 27001, GDPR, DSE/SEC guidelines



DevOps & CI/CD

- Version Control: Git + GitHub/GitLab
- CI/CD Pipelines: Jenkins / GitHub Actions
- Monitoring: Prometheus + Grafana (system health, alerts), Node_Explorer
- Logging: ELK Stack (Elasticsearch, Logstash, Kibana)
- Automation: Ansible / Terraform (Infrastructure as Code)

Takeaway: The XTrade OMS technology stack ensures **speed, security, and scalability**, giving brokerage houses and investors confidence that they're working with the **most advanced order management solution in the market**.

OMS / System Architecture

XTrade OMS is built on a **multi-layered, modular architecture** that ensures **real-time performance, scalability, and secure integrations** with trading systems, exchanges, and investor platforms.



Key Layers of the Architecture

Client Layer (User Access Layer)

- ✓ Web platform (React.js dashboards, trading terminals)
- ✓ Mobile apps (Android/iOS)
- ✓ Broker terminals (desktop apps)
- ✓ Secure login with MFA

API Gateway & Integration Layer

- ✓ API Gateway (Node.js / Kong / NGINX)
- ✓ REST & WebSocket APIs for real-time trading
- ✓ FIX Protocol adapters
- ✓ ITCH Protocol
- ✓ Third-party API integrations (banks, KYC/AML services)

Data Layer

- ✓ **Transactional Database** – PostgreSQL (ACID compliance)
- ✓ **Market Data Storage** – MongoDB / Time-series DB
- ✓ **Cache** – Redis (low-latency execution)
- ✓ **Search & Logs** – Elasticsearch

Infrastructure Layer

- ✓ **Containers** – Docker for microservices
- ✓ **Orchestration** – Kubernetes for auto-scaling
- ✓ **Load Balancers** – HAProxy / NGINX
- ✓ **Monitoring & Logging** – Prometheus, Grafana,
- ✓ **Cloud Platforms** – Local Cloud

Application Services Layer

- ✓ **Order Management Module** – order entry, modification, cancellation
- ✓ **Risk Management Engine** – exposure checks, margin limits, compliance
- ✓ **Portfolio Management** – holdings, P&L tracking
- ✓ **Analytics & AI Engine** – predictive models, trade patterns, anomaly detection
- ✓ **Notification & Alerts** – SMS, email, push notifications

Security & Compliance Layer

- ✓ End-to-end encryption (TLS 1.3, AES-256)
- ✓ Role-based access control (RBAC)
- ✓ Regulatory compliance (ISO 27001, GDPR, SEC/DSE guidelines)
- ✓ Intrusion detection & monitoring



Server & Hardware Requirements

XTrade OMS is optimized for both cloud-native deployments and on-premise installations. To ensure high availability, fault tolerance, and low-latency execution, we recommend the following specifications:



Minimum Requirements (for Pilot / Small Brokerage)

Component	Minimum Specification
CPU	4 Cores (Intel Xeon / AMD EPYC / equivalent)
RAM	16 GB
Storage	500 GB SSD (NVMe preferred)
Network	1 Gbps Ethernet
OS	Linux (Ubuntu 22.04 LTS / RHEL 9)
Database Server	PostgreSQL 14+ with replication enabled
Backup	Daily incremental + weekly full backup

Recommended Requirements (Mid-to-Large Brokerage)

Component	Minimum Specification
CPU	8–16 Cores (Intel Xeon Gold / AMD EPYC series)
RAM	32–64 GB
Storage	1–2 TB NVMe SSD + separate 1 TB backup storage
Network	Dual 10 Gbps Ethernet (with redundancy)
OS	Linux (Ubuntu LTS / RHEL / CentOS Stream)
Database Server	PostgreSQL cluster + Redis + MongoDB
High Availability	Load Balancer (HAProxy/NGINX) + Kubernetes nodes
Backup	Automated cloud backup + on-prem archive

Cloud Deployment Options

Cloud Provider	Recommended Setup	Notes
Local Data Center	Best in Industry	Best for scalable

ON-PREMISE DEPLOYMENT OPTIONS

Single Server Deployment (Small Brokerage):

All services on one high-performance server.

Cluster Deployment (Large Brokerage):

Separate nodes for Application, Database, and Analytics.

Disaster Recovery (DR):

Secondary server at remote site with automated replication.

ADDITIONAL RECOMMENDATIONS

- **UPS & Power Backup**

Minimum 30 mins uptime during outages.

- **Firewall & IDS/IPS**

Hardware firewall + intrusion detection.

- **Redundancy**

Dual power supply, RAID storage, failover clustering.

- **Monitoring**

Prometheus + Grafana for real-time hardware utilization.



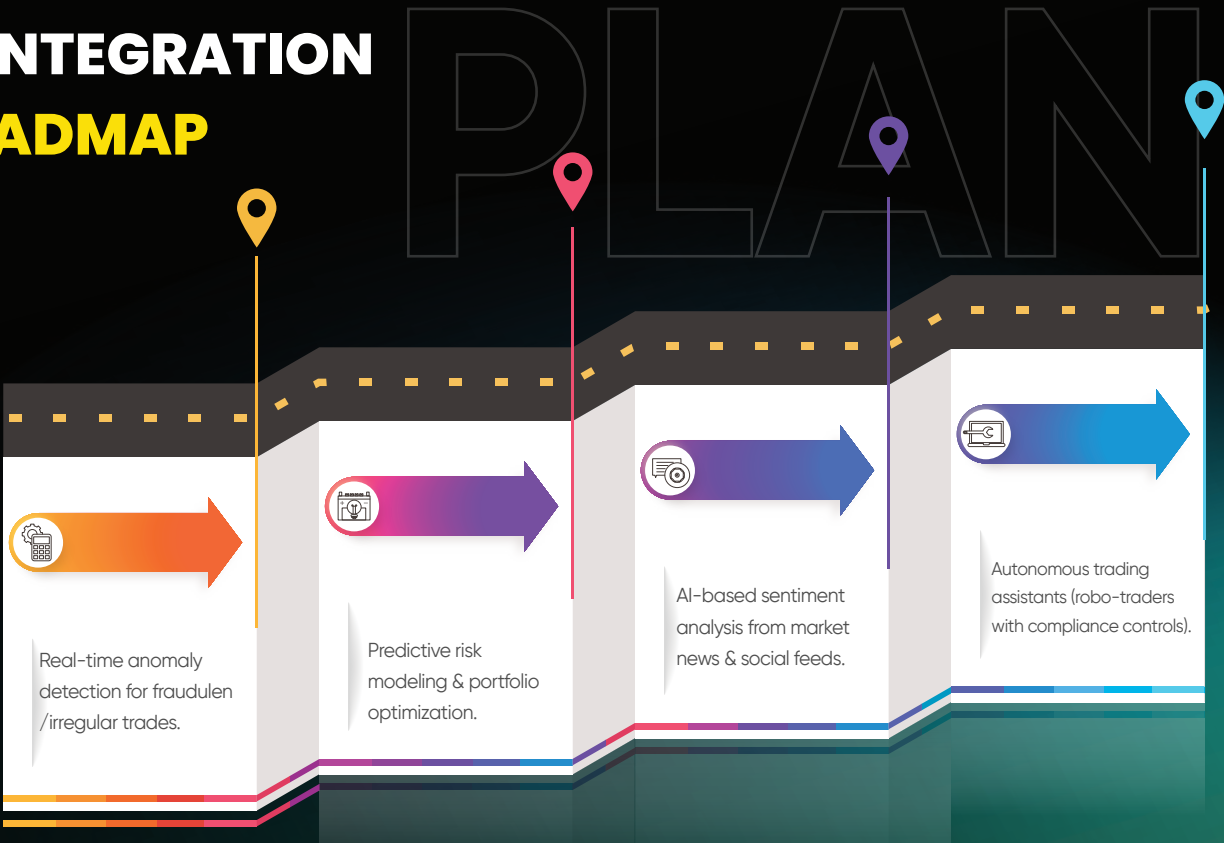
ROADMAP & FUTURE PLAN

XTrade OMS is not just a trading engine for today – it is a future ready capital market platform that continuously evolves with AI, cloud-native innovations, and regulator advancements.

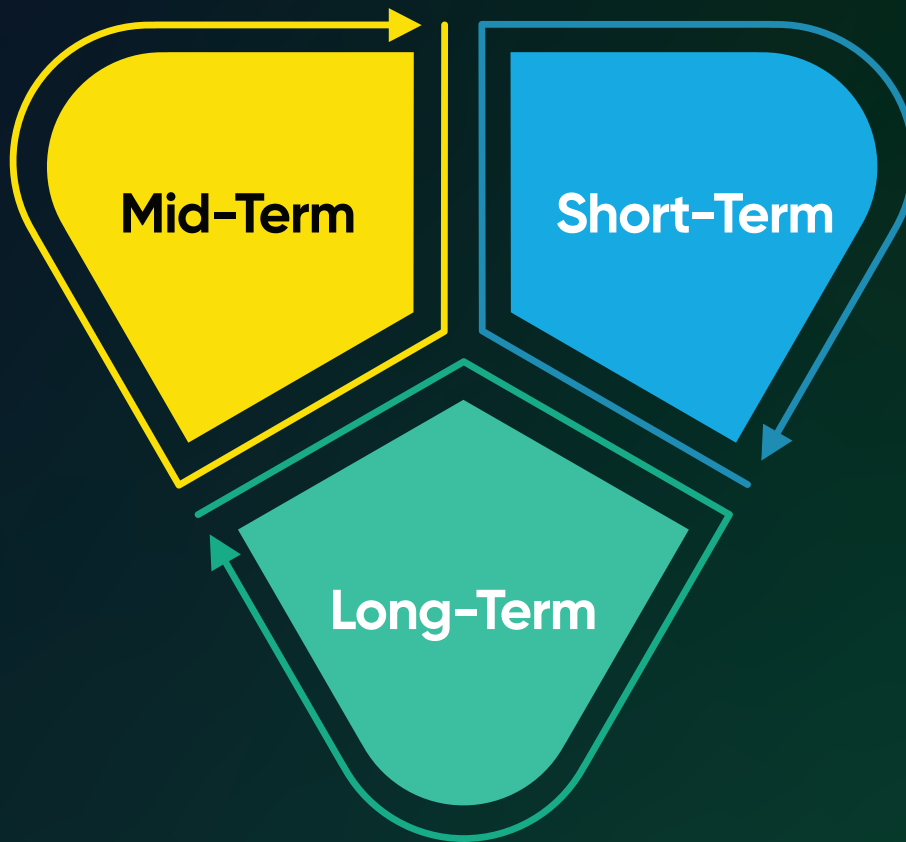
PLANNED FEATURES & ENHANCEMENTS

- **AI-Powered Decision Support**
predictive order execution, anomaly detection, robo-advisory modules.
- **Advanced Analytics Dashboards**
customizable KPIs, risk heatmaps, profit/loss trends.
- **Multi-Asset Support**
equities, bonds, commodities, derivatives, crypto.
- **Cross-Border Trading**
OMS adaptation for multiple exchanges & jurisdictions.
- **Mobile-First Expansion**
full trading features via iOS/Android apps.
- **Regulatory Automation**
automatic compliance reporting (DSE, SEC, MiFID II).
- **Blockchain for Settlements**
faster clearing & settlement using distributed ledger.

AI INTEGRATION ROADMAP



Expansion Goals



- **Short-Term (1–2 Years):**

- o Expand across regional brokerages.
- o Strengthen integrations with banks & fintech APIs.
- o Introduce AI-based risk monitoring.

- **Mid-Term (3–4 Years):**

- o Enter international markets with **multi-exchange compatibility**.
- o Launch **cloud-native SaaS OMS offering**.
- o Support **commodities & derivatives trading**.

- **Long-Term (5+ Years):**

- o Full AI-driven trading ecosystem
(portfolio management + execution).
- o **Blockchain-based settlement & clearing.**
- o Global expansion into **developed markets**
(NYSE, LSE, SGX).



CORE SECURITY FEATURES

Data Encryption

1

At Rest: AES-256 encryption for databases, logs, and backups.

In Transit: TLS 1.3 + HTTPS for all communication.

API Security: OAuth 2.0 / JWT tokens for secure API calls.



Authentication & Access Control

2

Multi-Factor Authentication (MFA): Password + OTP/biometric.

Role-Based Access Control (RBAC): Separate privileges for traders, admins, compliance officers.

Session Monitoring: Auto time-outs, suspicious login alerts.



Application Security

3

OWASP Top 10 Mitigation: Protection against SQL injection, XSS, CSRF.

API Rate Limiting & Throttling to prevent abuse.

Regular Penetration Testing & Vulnerability Scanning.



**Don't hesitate to contact us
for any kind of information**

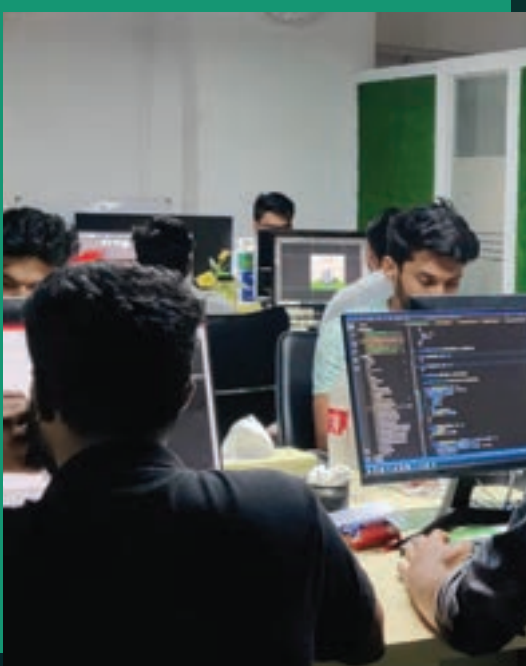
Call us for query
+8801911736731

CORPORATE OFFICE
CYGNUS INNOVATION LTD

House: C-39, 1st Floor,
Block: C, Niketon, Gulshan-1
Dhaka-1212, Bangladesh.

CONTACT INFO

- +880 1911-736731
- +880 1917-269727
- info@cygnusinnocation.com



DEVELOPMENT OFFICE
CYGNUS INNOVATION LTD

House: C-39, 1st Floor
Block: C, Niketon, Gulshan-1
Dhaka-1212, Bangladesh

CONTACT INFO

- +880-1911-736731
- +880-1917-269727
- info@cygnusinnovation.com